

DARRIEUS WIND TURBINE



ASSEMBLY INSTRUCTIONS



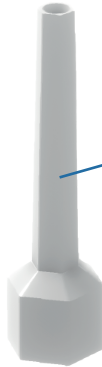
01 BEARING CHAMBER



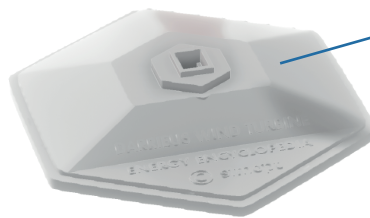
02 TOWER 1



03 TOWER 2



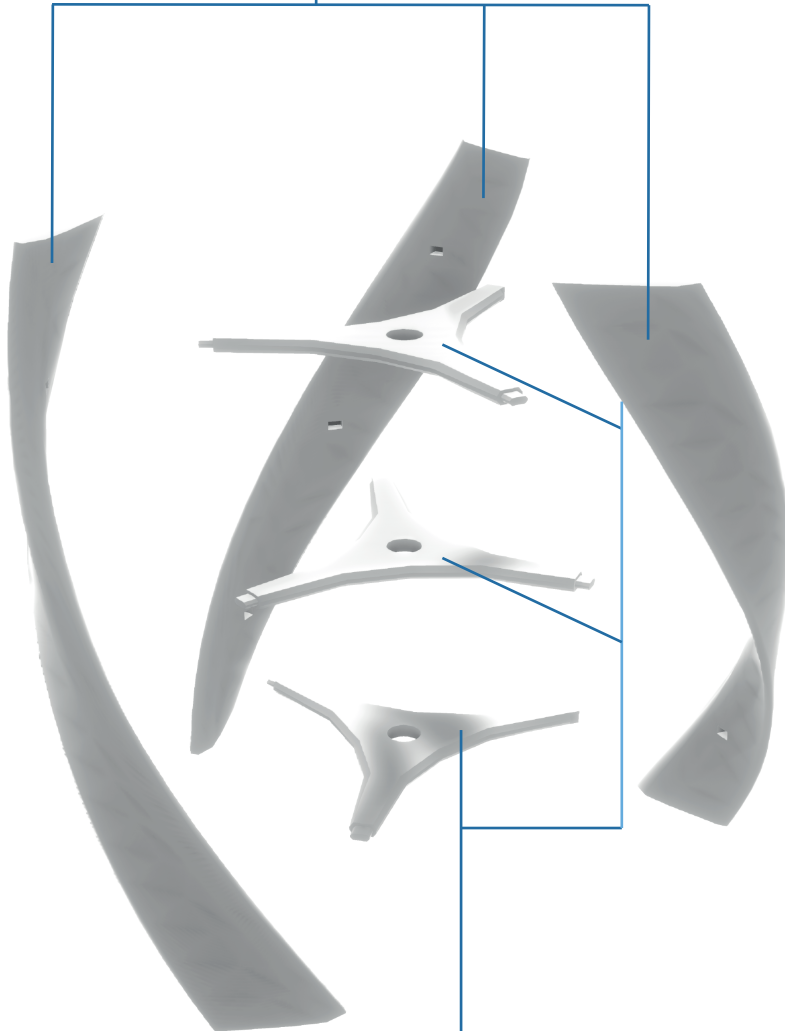
04 FOUNDATION



1



05 ROTOR BLADES



06 SUPPORTING STRUTS - RADIAL ARMS

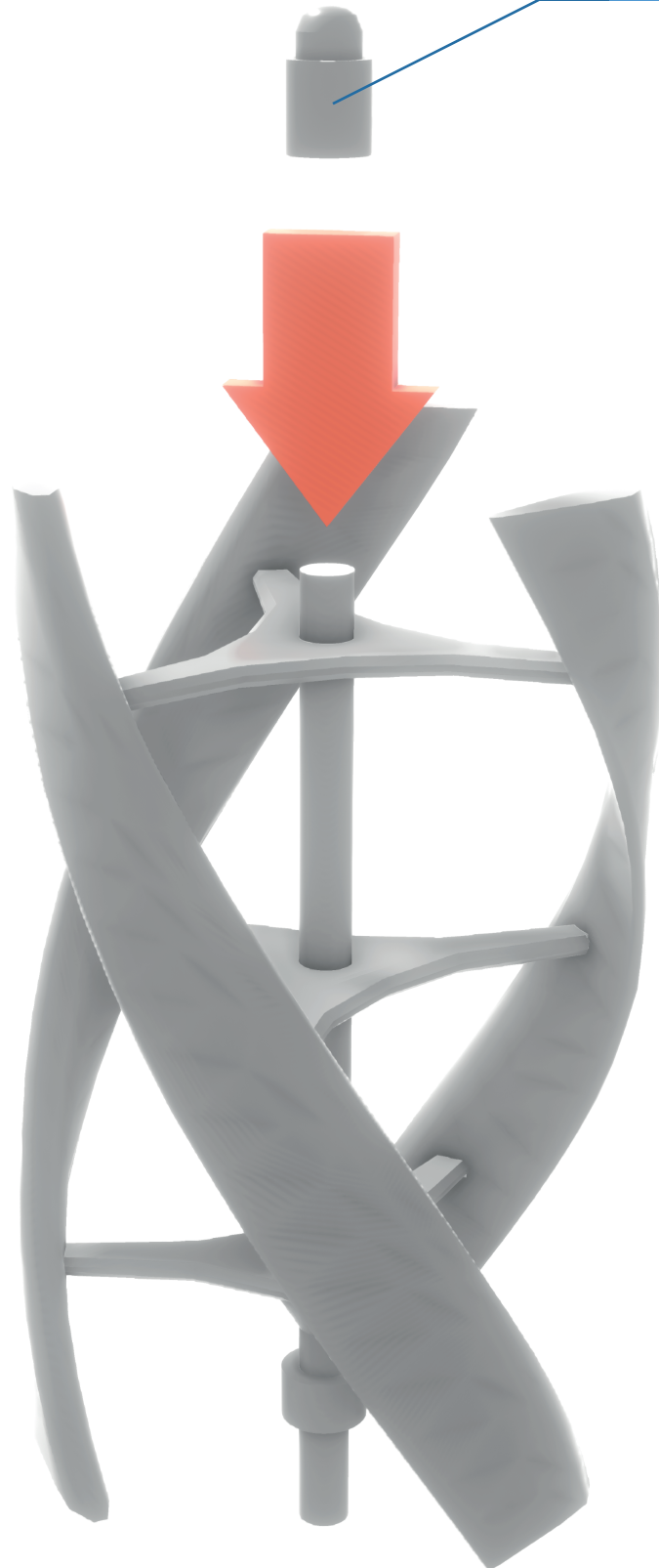


07 ROTOR SHAFT

3



08 ROTOR SHAFT ENDING





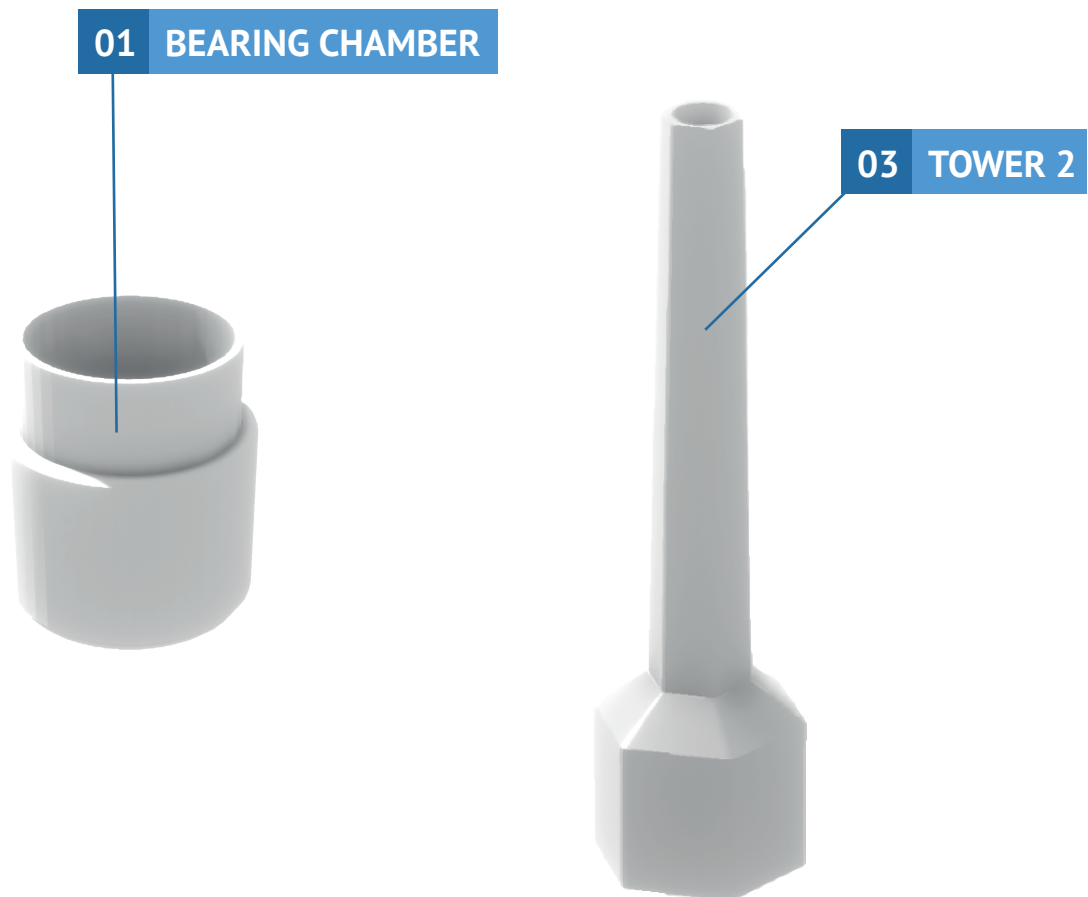
5



Parts No.1 and 3 can be used both with and without inserted bearing.

The parts are adapted for the use of bearing with dimensions:

- 19mm (outer diameter)
- 10 mm (inner diameter)
- 5 mm (height)





It is possible to add a small electric motor into the stand to spin the turbine. For this to function you need to print a few extra parts - the extension of the inner shaft and the motor mount for the stand.

